

Petticoat Lane

specialists in **COSTUME HIRE**



16 Harewood Road, Papanui, CHRISTCHURCH 8053 Ph: 03 354 3507

www.petticoatlane.co.nz

Dear Customer,

August 2017

Hello Panda! Have you seen our brand new deluxe black and white Panda headgear in store? Soft and easy to wear. A good warm winter costume choice.

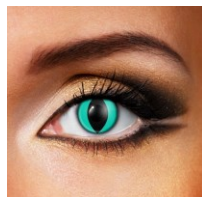
Gabrielle and the team @ Petticoat Lane

Eye Fusion One Day Lenses

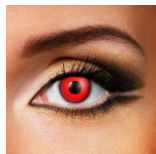
Our Australian supplier, in the costume business since 1912, is launching a **NEW** one day wear lens range this season.



Petticoat Lane is jumping on board this year



with the full range in store very shortly. There are 22 super zany styles to choose from.



Happy to Hire

Did you know that interestingly our business is predominantly a Costume Hire store. That means that even though people love looking 'online' at costumes to wear the reality is that they prefer to come into a cool specialist shop to get their costume sorted.

And as we know from years of experience - the picture on the packet and the product within can be quite different.

We love it when you hire at our store in Christchurch and shop local. Thank you.



Blood Bank & FX Makeup

New cosmetic grade blood products arriving soon in store at Petticoat Lane.

Best variety in town and great prices this year. Buy early!



Mask Matters

Look what's shipping towards our store this month! Zombie latex scary masks and all manner of horrible heads.

